

IEC Appliance Connector C14 with Appliance Plug F



Inlet with outlet

KPF Filter Module
(not enclosed)

C14

F



70° C

70° C



Description

- Panel Mount:
Sandwich/rear-side
- 2 Functions:
Inlet Protection class I, Outlet Protection class I
- For PCB mounting
- Alternative: version with line filter [KPF](#); [KPS](#)

Characteristics

- Panel mount from rear or "sandwich" between top and bottom/side to side panels
PCB mount with snap-in or screw-on feet (self tapping screws Ø 3 x 8 mm)
- All single elements are already wired
- Insulation cover on the rear-side
- Qualified for use in equipment according IEC/EN 60950

Other versions on request

- Solder terminals
- Quick-connect terminals
- For protection class II

Weblinks

Approvals: <http://www.schurter.com/approvals>
RoHS: <http://www.schurter.com/rohs>

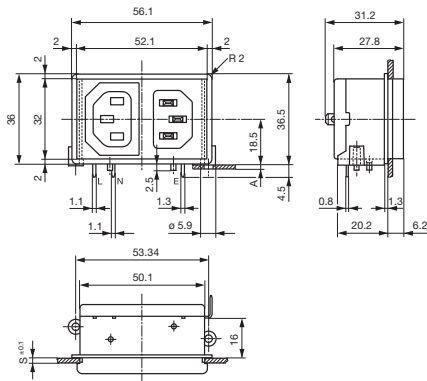
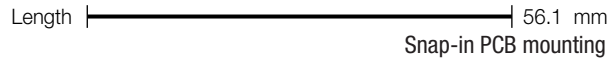
Technical Data

Ratings IEC	10 A / 250 VAC; 50 Hz
Ratings UL/CSA	10 A / 125 VAC; 60 Hz
Dielectric Strength	> 2.3 kVAC between L-N > 2.8 kVAC between L/N-PE (1 min/50 Hz)
Allowable Operation Temp.	-25 °C to 70 °C
Degree of Protection	from front side IP 40 acc. to IEC 60529
Protection Class	Suitable for appliances with protection class I acc. to IEC 61140
Terminal	For PCB mounting Quick connect terminals 4.8 x 0.8 mm Solder terminal on request
Panel Thickness s	Snap-in: 1.5/2/2.5/3 mm
Material: Housing	Thermoplastic, black, UL 94V-0

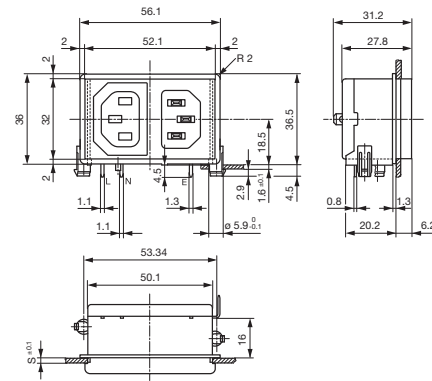
Appliance-Inlet /-Outlet	C14 acc. to IEC/EN 60320-1 and F acc. to IEC/EN 60320-2-2, UL 498, CSA C22.2 no. 42 (for cold condition) pin-temperature 70 °C, 10 A, Protection class I
--------------------------	--

Dimensions

Screw on PCB mounting



Snap-in PCB mounting



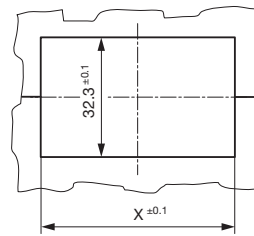
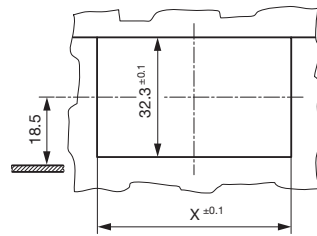
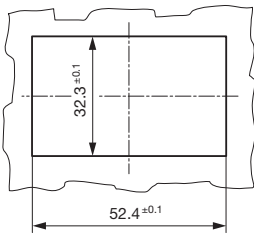
A = for PCB-thickness 1.2/1.6/2.0/2.4 mm
Additional quick connect terminal 4.8 x 0.8 mm

Additional quick connect terminal 4.8 x 0.8 mm
s = panel thickness

Mounting holes for backside mounting

Sandwich mounting holes

Sandwich mounting holes

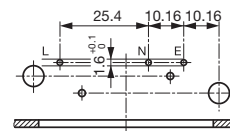
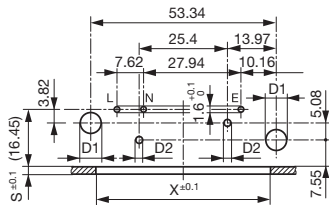


X = 48.4 at S = 1.5 and 2.5
X = 50.4 at S = 2.0 and 3.0

X = 48.4 at S = 1.5 and 2.5
X = 50.4 at S = 2.0 and 3.0

For 2-pole inlet/switch, 2-pole inlet/fuseholder and inlet/outlet

For 1-pole inlet/switch and 1-pole inlet/fuseholder
S and X see mounting holes



Other dimensions as for 2-poles

d1 = 6 ± 0.05 for (snap-in)

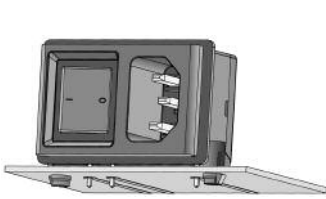
d1 = 3.6 (screw-on)

d2 = 2 ± 0.1 (screw-on)

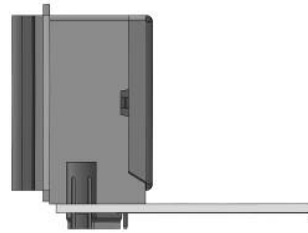
Dimensions without tolerance:

≤ 15 = ± 0.05; ≥ 15 = ± 0.1

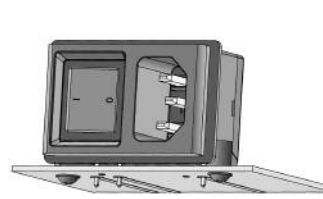
Mounting instructions



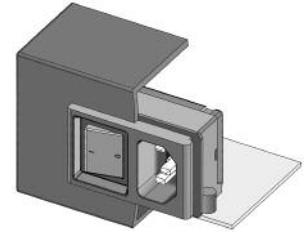
Stable snap feet requires minimal insertion force



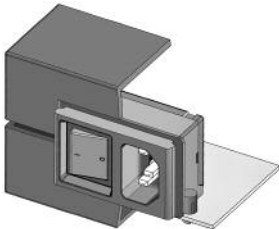
Module must lay flat on the PCB when soldering



Screw-on mount uses self-tapping screws

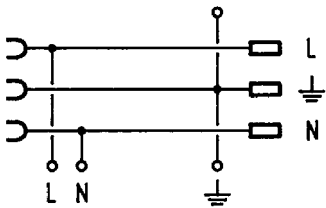


Insertion from behind



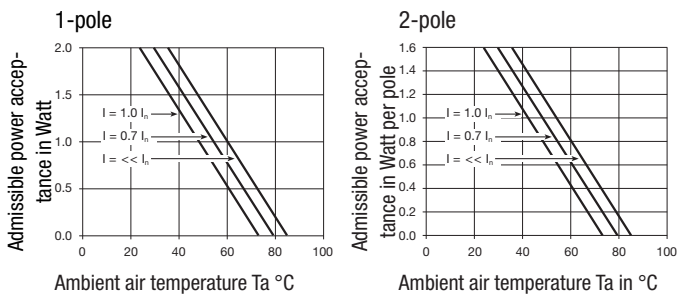
"Sandwich" mounting with split enclosure panels

Diagrams



Inlet with outlet

Derating curves



Variants

Panel mounting	Panel Thickness s [mm]	PCB [mm]	Line Switch	Fuseholder	Appliance outlet	Order Number
Snap-in	2	1.6	-	-	F	KP01.1012.01
Snap-in	3	1.6	-	-	F	KP01.1013.01
Screw-on	2	1.2/1.6/2.0/2.4	-	-	F	KP01.1052.01
Screw-on	3	1.2/1.6/2.0/2.4	-	-	F	KP01.1053.01

Type KP without cover: KP01.XXXX.XX90

Ground Terminal with solder pin: KP01.XXXX.X3XX

Packaging unit 50 Pcs